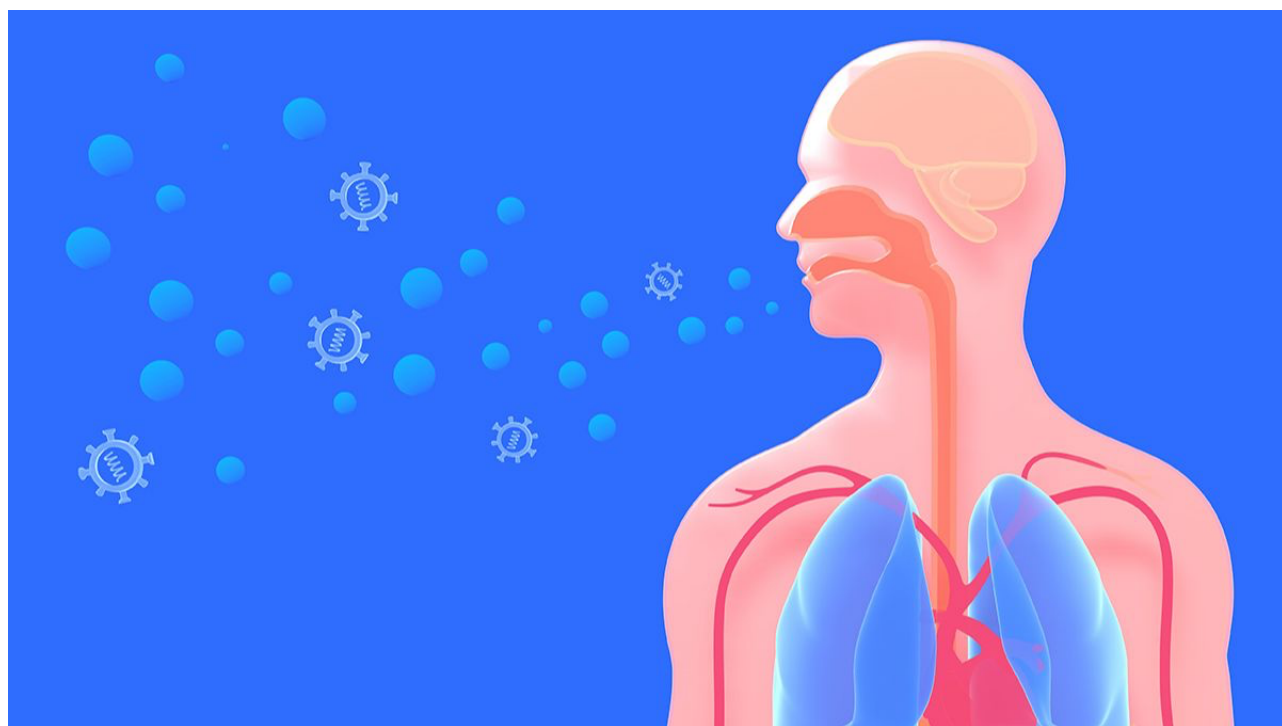


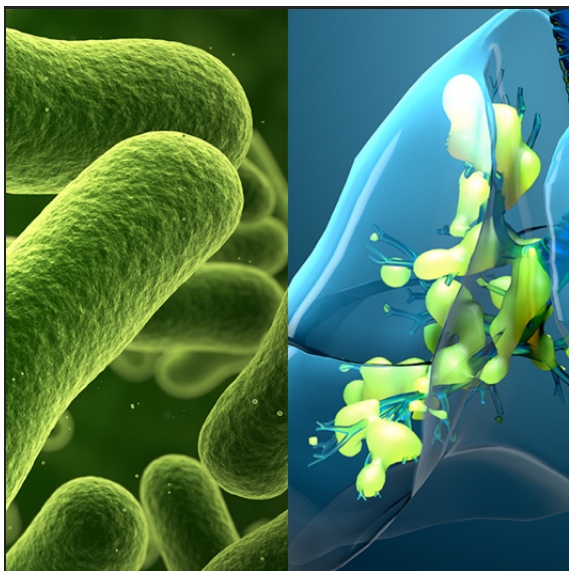
[Subscribe](#)[Past Issues](#)[Translate](#) ▼[View this email in your browser](#)[About Us](#)[Member Services](#)[Our Programs](#)[Our Products](#)[Latest News](#)

Blu Biotech Inc. to develop and commercialize breath analysis technology developed at U-M Weil Institute and College of Engineering

US-based medical diagnostics company Blu Biotech Inc. has entered into a Patent License Agreement with Innovation Partnerships at the University of Michigan (U-M) to develop and commercialize a Micro Gas Chromatography Photoionization Detector (Micro-GC-PID) that uses a patient's breath to diagnose various forms of cancer, COVID-19 and related variants, acute respiratory distress syndrome (ARDS), sepsis, and other acute and chronic

inflammatory diseases. The device was developed at the U-M College of Engineering and Weil Institute through the efforts of Dr. Xudong Fan and Dr. Kevin Ward.

[Read Full Story](#)



Weil Institute and Blu Biotech Inc. Collaborating on Sepsis/ARDS Biomarker Development

In a follow up to our feature story this issue, Blu Biotech Inc. announced it has formed a collaboration with U-M and the Weil Institute to develop biomarkers of sepsis and acute respiratory distress syndrome (ARDS).

Once clinical research has concluded, Blu Biotech will seek FDA approval for the use of the discovered biomarkers in the proprietary Micro GC device which was recently licensed to them by U-M.

[**READ MORE**](#)



Study Finds Anti-anaerobic Antibiotics Associated with Increased Risk of Mortality in Critically Ill Patients

A common clinical practice may be inadvertently harming patients, according to new research published earlier this Fall in the *European Respiratory Journal*.

The team of Michigan Medicine researchers behind the study suggest that administration of antibiotics with activity against anaerobic bacteria has a profound effect on the gut microbiome and, ultimately, an adverse impact on critically ill patients.

[**READ MORE**](#)



Emergency Department-based ICU (ED-ICU) Improves Quality of Care and Outcomes Without Increasing Costs

Study of Michigan Medicine's Emergency Critical Care Center (EC3) finds no significant increase in direct cost of care following EC3 deployment, contributing further evidence toward the value of the ED-ICU as both a viable and cost-effective model for care delivery.

[LEARN MORE](#)



Weil Institute Executive Director Receives American College of Emergency Physicians (ACEP) Award

Kevin Ward, MD, has received the ACEP Leadership Award for Outstanding Contribution in Research! This award is presented to an ACEP member who has made a significant contribution to research in emergency medicine. Congratulations, Dr. Ward!

[READ MORE](#)





The Kahn Pediatric Critical Care Grand Challenge Kickoff (December 8 | 8:30am-12:30pm | NCRC Dining Hall)

The inaugural Kahn Pediatric Critical Care Grand Challenge will soon begin! Supported by philanthropist Mark Kahn and hosted by the U-M Weil Institute, the Grand Challenge seeks to support high-risk ideas and innovations poised to transform care and outcomes for critically ill and injured children.

Up to \$400k will be available to support multidisciplinary research teams. More information is available at kahngandchallenge.com.

[View Event Page](#)



Interested in pursuing these or other funding opportunities?

Let the Weil Proposal Development team support you!

[Click this banner to learn more](#)

[US Army Medical Research and Development Command](#)

The [DoD USAMRDC](#) has released its new BAA, with a rolling deadline through 2027. Budgets are not limited, and grants can be for up to 4 years. Pre-applications are required, and full applications can only be submitted if invited.

Combat casualty care areas of interest are related to **hemorrhage, TBI, acute secondary organ damage, care during transport, and burn injuries.**

[Emergency Medicine Foundation](#)

The Emergency Medicine Foundation has a number of grants available that will be **due January 20, 2023**. These include:

- Mid-Career Research Development Grant,
- Early Career Research Development Grant,
- Health Disparities Research Grant,
- Pilot Project Research Grant,
- Medical Student Research Grant,
- [Many others!](#)

[American Heart Association](#)

- **Career Development Award** (\$231,000 over 3 years; **Due Dec 8**)
- **Established Investigator Award** to support established investigators who are in a rapid growth phase of their career (\$400,000 over 5 years; **Invited Full proposal due Jan 12**)
- [Many others!](#)



[New Publications](#)

Weil members, please remember to note your affiliations with the Weil Institute so we can help amplify your research!

[Chiral Chromatography and Surface Chirality of Carbon Nanoparticles](#)

DOI: 10.1002/chir.23507

[Cost-effectiveness of an Emergency Department-Based Intensive Care Unit](#)

DOI: 10.1001/jamanetworkopen.2022.33649

[Eligibility of Out-of-Hospital Cardiac Arrest Patients for Extracorporeal Cardiopulmonary Resuscitation in the United States: A Geographic Information System Model](#)

DOI: 10.1016/j.resuscitation.2022.09.017

[Identifying Potential Candidates for Advanced Heart Failure Therapies Using an Interpretable Machine Learning Algorithm](#)

DOI: 10.1016/j.healun.2022.08.028

[In Critically Ill Patients, Anti-Anaerobic Antibiotics Increase Risk of Adverse Clinical Outcomes](#)

DOI: 10.1183/13993003.00910-2022

[Portable Comprehensive Two-Dimensional Micro-Gas Chromatography Using an Integrated Flow-Restricted Pneumatic Modulator](#)

DOI: 10.1038/s41378-022-00452-5

See all member publications from 2022

CLICK HERE TO BECOME A MEMBER

CLICK HERE TO SUBMIT A STORY

About the Weil Institute

The Weil Institute for Critical Care Research & Innovation is named after the late Dr. Max Harry Weil—a physician and professor widely regarded as a key founder of the field of critical care.

As the Weil Institute, we are one of the world's first comprehensive research enterprises devoted to transforming critical care medicine by

accelerating science and moving it from bench to bedside. We do so by bringing together integrative teams of world-class U-M scientists, clinicians, and engineers with industry partners and funding sources to develop and deploy cutting-edge solutions that elevate the care, outcomes, and quality of life of critically ill and injured patients and their families.



"When you
save one life..."

...it is as if you
saved the
entire world."

Connect With Us!

The Max Harry
Weil Institute
FOR CRITICAL CARE RESEARCH & INNOVATION

M | MICHIGAN MEDICINE
UNIVERSITY OF MICHIGAN



*Copyright © 2022 The Weil Institute for Critical Care Research and Innovation
All rights reserved.*

Our mailing address is:

The Max Harry Weil Institute for Critical Care Research and Innovation
2800 Plymouth Rd Rm 106
NCRC Building 10
Ann Arbor, MI 48109-2800

**You are receiving this email because you are a Weil Institute member,
supporter, or industry partner.**

You can [update your preferences](#), [unsubscribe from this list](#), or [subscribe to this list](#).

